



INDOFINE Chemical Company, Inc.

121 Stryker Lane, Bldg. 30, Suite 1 • Hillsborough, NJ 08844 • U.S.A.

Phone: (908) 359-6778 • FAX: (908) 359-1179

website: www.indofinechemical.com

e-mail: chemical@indofinechemical.com

CERTIFICATE OF ANALYSIS

Catalog Number: 021217

Product Name: **4'-METHOXYCHALCONE**

CAS Number: [959-23-9]

Lot Number: 0810061

Chemical Formula: C₁₆H₁₄O₂

Molecular Weight: 238.29

Melting Point: 98-102°C

Appearance: Light yellow powder

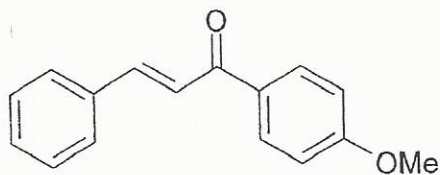
Solubility: Soluble in chloroform

T.L.C.: n-Hexane:Ethyl acetate (7:3)

NMR Spectrum: Enclosed (conforms to the structure)

Storage: Store in a cool, dry place

Purity(HPLC): 99.52%





INDOFINE Chemical Company, Inc.

121 Stryker Lane, Bldg. 30, Suite 1 • Hillsborough, NJ 08844 • U.S.A.

Phone: (908) 359-6778 • FAX: (908) 359-1179

website: www.indofinechemical.com

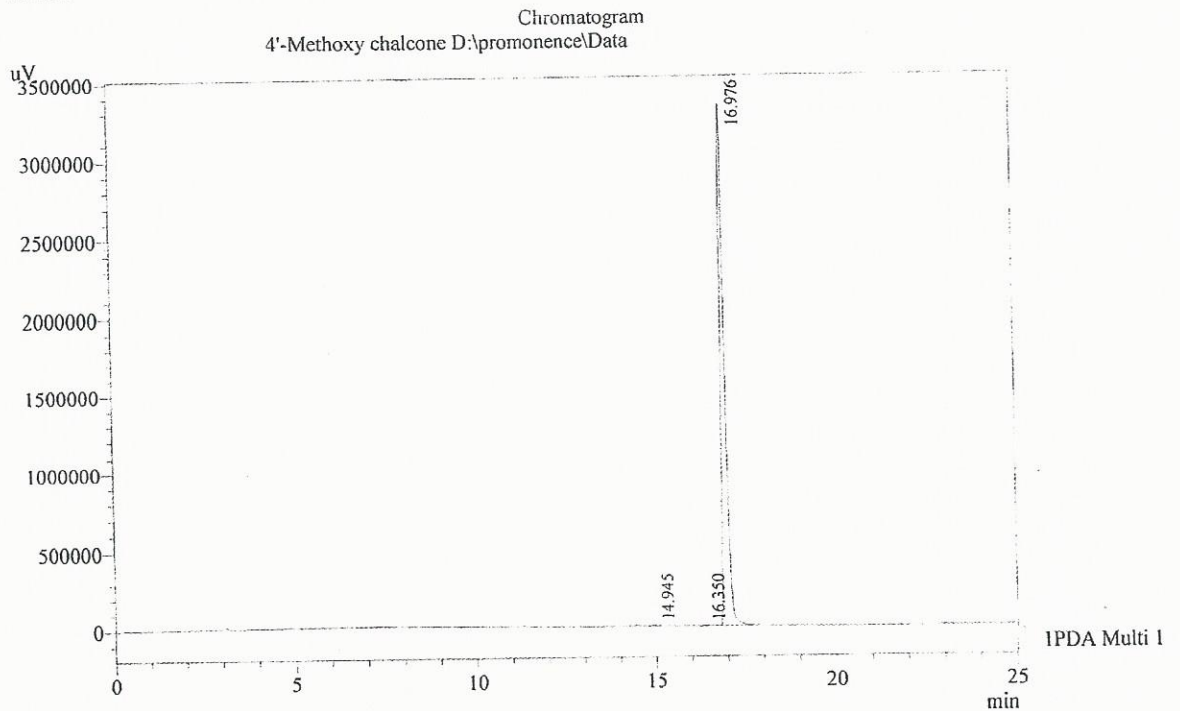
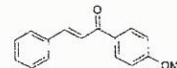
e-mail: chemical@indofinechemical.com

HPLC ANALYSIS

Acquired by : Admin
 Sample Name : 4'-Methoxy chalcone
 Sample ID : Lot no:0810061
 Injection Volume : 20 uL
 Data Filename : 190815O.lcd
 Method Filename : Linear Gradient.M.lcm

Catalog No.: 021217
 Product Name: 4'-Methoxychalcone
 Lot No.: 0810061

Column : LUNA C-18, (250mm x4.6mm 5.0μ)
 Flow : 1.000 mL/min.
 Mobile Phase : A(0.05% TFA in Water) B(Acetonitrile)
 0.01 90 10
 12.0 10 90
 20.0 10 90
 23.0 90 10
 25.0 90 10
 Diluent : Acetonitrile



1 PDA Multi 1 / 230nm 4nm

PeakTable

PDA Ch1 230nm 4nm

Peak#	Name	Ret. Time	Area	Area %	Relative Retention Time
1	RT:14.945	14.945	74797	0.28	0.88
2	RT:16.350	16.350	41488	0.16	0.96
3	4'-Methoxychalcone	16.976	26502654	99.56	1.00
Total			26618939	100.00	

ICG **INDOFINE Chemical Company, Inc.**

121 Stryker Lane, Bldg. 30, Suite 1 • Hillsborough, NJ 08844 • U.S.A.

Phone: (908) 359-6778 • FAX: (908) 359-1179

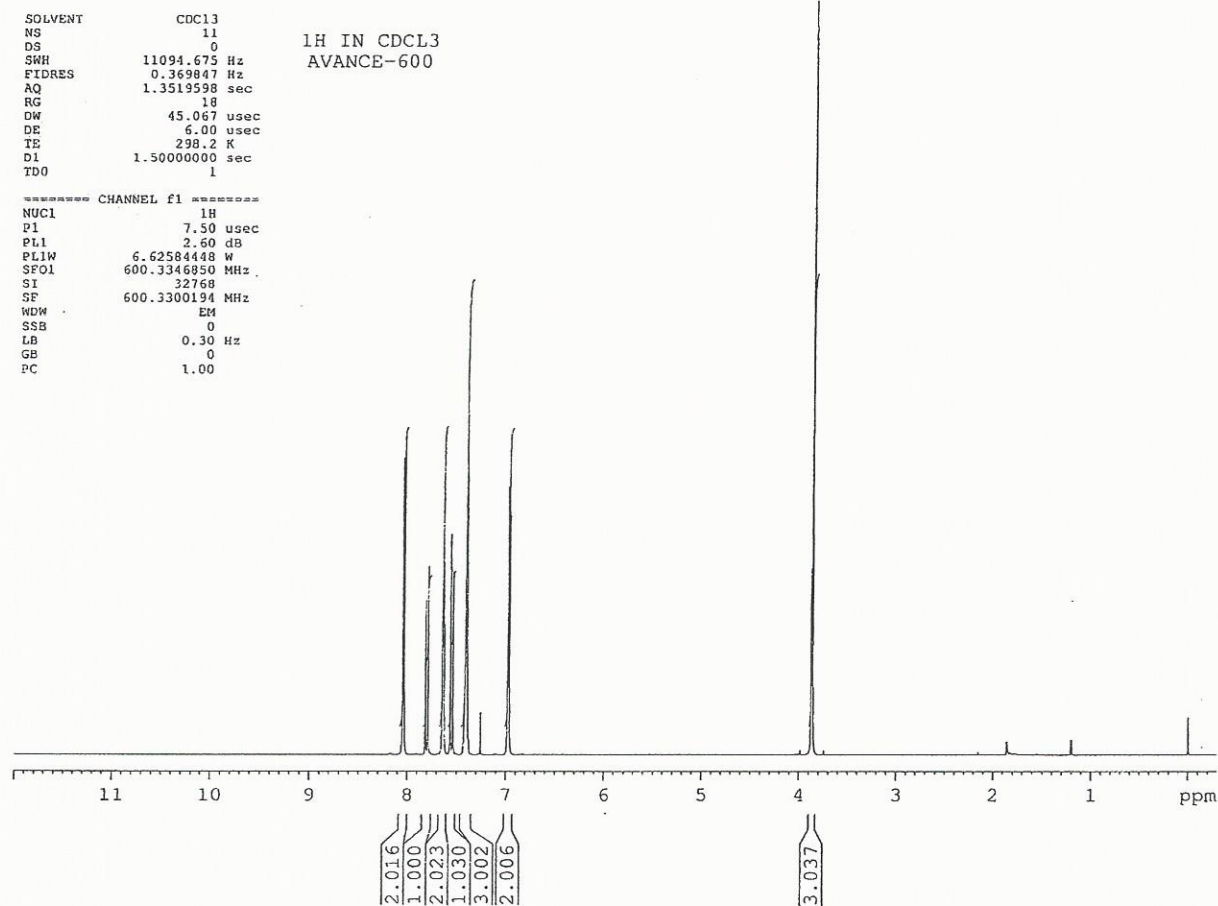
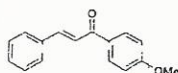
website: www.indofinechemical.com

e-mail: chemical@indofinechemical.com

Catalog No.: 021217

Product Name: 4'-Methoxychalcone

Lot No.: 0810061





INDOFINE Chemical Company, Inc.

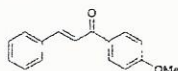
121 Stryker Lane, Bldg. 30, Suite 1 • Hillsborough, NJ 08844 • U.S.A.

Phone: (908) 359-6778 • FAX: (908) 359-1179

website: www.indofinechemical.com

e-mail: chemical@indofinechemical.com

Catalog No.: 021217
Product Name: 4'-Methoxychalcone
Lot No.: 0810061



SOLVENT CDC13
NS 11
DS 0
SWH 11094.675 Hz
FIDRES 0.369847 Hz
AQ 1.3519598 sec
RG 18
DW 45.067 usec
DE 6.00 usec
TE 298.2 K
D1 1.50000000 sec
TD0 1

1H IN CDCL3
AVANCE-600

----- CHANNEL f1 -----
NUC1 1H
P1 7.50 usec
PL1 2.60 dB
PLW 6.62584448 W
SFO1 600.3316850 MHz
SI 2768
SF 600.3300194 MHz
WDW EM
SSB 0
LB 0.30 Hz
GB 0
PC 1.00

